

May & SON

With Guests



Lot 1

Annual Production Sale

SATURDAY, SEPTEMBER 15, 2018 • 1 pm

Knoxville Livestock Center • Knoxville, Tennessee

May & Son

With Guests

Production Sale

Saturday, September 15, 2018

Knoxville Livestock Center

8706 Mascot Road, Knoxville, TN 37924

Friday, September 14, 2018

Cattle Arrive & Available For Viewing

Saturday, September 15, 2018

8:00 AM - Cattle Available for Viewing

Noon - Lunch Available at Sale Barn

1:00 PM - Sale Starts!

Sale Sponsor:

Bill May
2760 Renfro Road
Jefferson City, TN 37760
865-599-5075

Sale Day Phone:

Sale Barn: 865-933-1691
Bill May: 865-599-5075
Floyd Wampler: 423-612-2144

Sale Headquarters:

Best Western Knoxville, 865-544-7737
Ask for "Cattle Sales" \$79.99 + Tax

Auctioneer:

Terry Baxter, Newport, TN, TN Lic # 2301
423-608-0345

Representative:

Floyd Wampler - Charolais Journal
423-612-2144
Ray Campbell - Sale Consultant
931-308-7770
Harry Bacon - Sale Consultant
865-680-5263
Mike Collins - Special Assignment

Trucking:

Mark Howard - 865-300-3636

Health:

A proper Interstate Health Certificate will be furnished. All females selling as pregnant will be preg checked by a vet and called accordingly. All bulls will be fertility tested satisfactory.

Terms & Conditions:

All sales are cash or check and settlement must be made upon conclusion of the sale. Cattle will not be released until settlement is made. Please make checks payable to Knoxville Livestock Center. Cattle will be sold under the standard terms and conditions recommended by the American-International Charolais Association.

Bids:

If you are unable to attend, phone your bid in to Floyd Wampler or any consultant. They will bid for you in strict confidence.

Dear Friends,

It is my pleasure to welcome you to the May & Son Charolais Production Sale!

After 50 years in the Charolais business, May & Son is still in the practice of producing cattle that can go out in the real world and be highly productive and profitable for their new owners. REAL WORLD PERFORMANCE that can help one in the beef business.

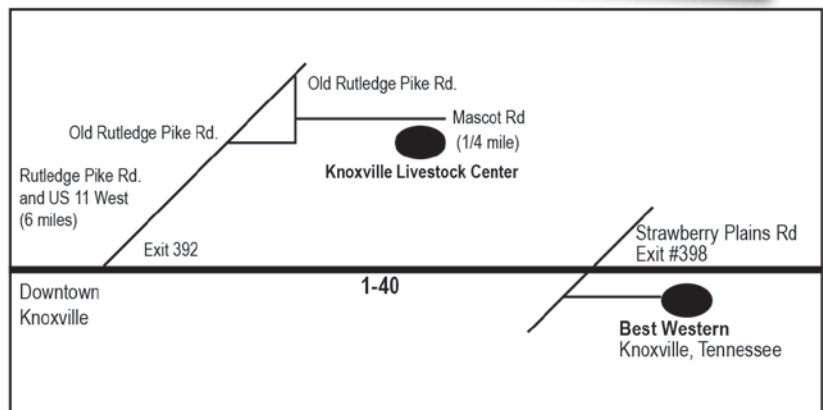
Bill's addition of RAY'S POWER SURGE B409 to his program has proven to be a valuable asset as his calves are stompin' good. His get and service will be offered on sale day. Also included in this sale will be the dam of RAY'S POWER SURGE B409, VCR MISS SILVERMAN 259P.

Also a big thanks to the consignors for providing a tremendous set of Charolais cattle for this sale. Come join us on sale day and plan to invest in some of these great genetics that are being offered.

If I or any of the sale staff can be of assistance, please don't hesitate to contact us.

Sincerely,

Terry Baxter, Auctioneer
423-608-0345



Roy May & Son • Lots 1-32

1 MS MAY SURGE ROYCE 7160

BD: 03/18/17 F1246254 HERD# 7160 POLLED

SCR CE CORONA POWER 222
RAY'S POWER SURGE B409
 M849259 VCR MISS SILVERMAN 259 P

JES CORONA J370
 SCR MISS WIND POWER 047
 VCR SIR SILVERMAN 508 P
 VCR MISS SHOOTER 35 PLD

COOLEY ROYCE 1107T39
MS MAY COOLEY ROYCE 3784
 F1189540 MISS MAY CIGAR MAC 0868

SCHURRTOP HCR RANCHER
 MS COOLEY S DUKE 1107N60
 MAY GOLD CIGAR 4099 ET
 MISS MAY PERFECT MAC 6246

CE	BW	WW	YW	Milk	MCE	MTNL	SC	TSI
4.6	0.0	40	70	14	4.9	33	1.0	212.64

- Sells Open
- An outstanding individual that's as near right in every way, complete in her overall make-up and design. One that can contribute to the genetic base of any herd.

BW	Adj WW	Ratio	Adj YW	Ratio
84	784	117		



2 MS MAY GRID ROYCE 7182

BD: 03/12/17 F1246257 HERD# 7182 POLLED

M6 GRID MAKER 104 PET
BAMBOO GRID MAKER 3358
 M847441 BAMBOO MS DUKE 1352

VCR SIR TRADITION 066
 VCR MISS MAC IV 317
 VCR SIR DUKE 7340 P
 GF BUDS MS CROWN 919 P

COOLEY ROYCE 1107T39
MS MAY COOLEY ROYCE 3752
 F1189529 MISS MAY CIGAR 8360

SCHURRTOP HCR RANCHER
 MS COOLEY S DUKE 1107N60
 MAY GOLD CIGAR 4099 ET
 MISS MAY WIND 3024

CE	BW	WW	YW	Milk	MCE	MTNL	SC	TSI
6.9	0.3	34	63	14	4.6	31	1.0	209.83

- Sells Open
- Stout, thick, correct and strong all over. A heifer with the sheer power and internal dimension to become a valuable asset.

BW	Adj WW	Ratio	Adj YW	Ratio
82	746	111		



Ray's Power Surge B409 - Sire of Lots 1, 3-6

3 MS MAY SURGE ROYCE 7140

BD: 02/20/17 F1246249 HERD# 7140 POLLED

SCR CE CORONA POWER 222
RAY'S POWER SURGE B409
 M849259 VCR MISS SILVERMAN 259 P

JES CORONA J370
 SCR MISS WIND POWER 047
 VCR SIR SILVERMAN 508 P
 VCR MISS SHOOTER 35 PLD

COOLEY ROYCE 1107T39
MISS MAY ROYCE 4272 TW
 F1210742 MISS MAY WINNER CIGAR 1225

SCHURRTOP HCR RANCHER
 MS COOLEY S DUKE 1107N60
 RC WINNER 9403 PD ET
 MISS MAY CIGAR 8348

CE	BW	WW	YW	Milk	MCE	MTNL	SC	TSI
3.2	0.1	31	58	14	3.4	30	1.0	201.25

- Sells Open
- A really nice female with a great future ahead of her. Outstanding numbers and will be a big powerful cow.

BW	Adj WW	Ratio	Adj YW	Ratio
78	661	99		



4 MS MAY SURGE WINNER 6719

BD: 10/15/16 F1245419 HERD# 6719 POLLED

SCR CE CORONA POWER 222
RAY'S POWER SURGE B409
 M849259 VCR MISS SILVERMAN 259 P

JES CORONA J370
 SCR MISS WIND POWER 047
 VCR SIR SILVERMAN 508 P
 VCR MISS SHOOTER 35 PLD

RC WINNER 9403 PD ET
MISS MAY WINNER DUKE 3142
 F1174243 MISS MAY MAC 9668

RC DENVER 6026 PLD
 RC MS MONTANA 923 PLD
 MAY ROPER MAC 3023 ET
 MISS MAY DUKE 264 ET

CE	BW	WW	YW	Milk	MCE	MTNL	SC	TSI
5.5	-0.8	31	52	10	3.4	25	0.9	194.34

- Safe bred to May Cooley Royce 5721 M881588.
- A top-notch daughter of Power Surge. One whose value lies in her future.

BW	Adj WW	Ratio	Adj YW	Ratio
74	632	100		



5 MS MAY SURGE WINNER 6721

BD: 11/20/16 F1245420 HERD# 6721 POLLED

SCR CE CORONA POWER 222
RAY'S POWER SURGE B409
 M849259 VCR MISS SILVERMAN 259 P

RC WINNER 9403 PD ET
MISS MAY SURE WINNER 1227
 F1140803 MISS MAY WIND 8354

JES CORONA J370
 SCR MISS WIND POWER 047
 VCR SIR SILVERMAN 508 P
 VCR MISS SHOOTER 35 PLD
 RC DENVER 6026 PLD
 RC MS MONTANA 923 PLD
 MAY EAST WIND 3022 ET
 MISS MAY SCHURRTOP 6172

CE	BW	WW	YW	Milk	MCE	MTNL	SC	TSI
6.2	-0.9	30	52	11	4.3	26	0.9	194.83

BW	Adj WW	Ratio	Adj YW	Ratio
74	660	100		

- Safe bred to May Cooley Royce 5721 M881588.
- A nice, young bred heifer. She will make a great addition to any herd.



6 MS MAY SURGE CIGAR 6705

BD: 09/18/16 F1245418 HERD# 6705 POLLED

SCR CE CORONA POWER 222
RAY'S POWER SURGE B409
 M849259 VCR MISS SILVERMAN 259 P

LOF AUGUSTUS MAC 10 T
MISS MAY CIGAR DUKE 1245
 F1140812 MAY PERFECT DUKE 172 ET

JES CORONA J370
 SCR MISS WIND POWER 047
 VCR SIR SILVERMAN 508 P
 VCR MISS SHOOTER 35 PLD
 LHD CIGAR E46
 DVCR LADY MAC 604 P ET
 VCR SIR DUKE 914 PLD
 MD MS PERFECT B40

CE	BW	WW	YW	Milk	MCE	MTNL	SC	TSI
5.1	-0.5	33	55	12	5.2	28	1.0	196.00

BW	Adj WW	Ratio	Adj YW	Ratio
80	630	100		

- Safe bred to May Cooley Royce 5721 M881588.
- Another good Power Surge female with balanced EPD's.

7 MISS MAY SMOKESTER 5749

BD: 10/28/15 F1220605 HERD# 5149 POLLED

JDJ SMOKESTER J1377 P ET
MAY SMOKESTER 9512
 EM788769 JC MAGGIE PLD

MAY WAYLON 9618
MISS MAY GENEVA 2714
 F1157773 MISS MAY GENEVA MAC 9624

LHD CIGAR E46
 JD MS COMMANDER B309
 VCR SIR DUKE 914 PLD
 JC MAGNOLIA
 CJC MR PRESIDENT T122
 JC MAGGIE PLD
 MAY ROPER MAC 3023 ET
 MISS MAY WIND 4067 ET

CE	BW	WW	YW	Milk	MCE	MTNL	SC	TSI
2.6	3.4	32	52	16	4.6	32	0.9	191.14

BW	Adj WW	Ratio	Adj YW	Ratio
82				

- Polled bull calf born 8/22/17 by Ray's Power Surge.
- A nice young female with a lot of productive years ahead with Smokester and Winner in pedigree.



8 MISS MAY COOLEY 5727

BD: 10/24/15 F1220600 HERD# 5727 POLLED

SCHURRTOP HCR RANCHER
COOLEY ROYCE 1107T39
 M745957 MS COOLEY S DUKE 1107N60

RC WINNER 9403 PD ET
MISS MAY WINNER 1249
 F1140814 MISS MAY MAC 8390

SCHURRTOP EASE 8953 PLD
 SCHURRTOP ML 6056 1184 P
 WCR SIR DUKE 17J ET P
 MS CCR TRADIT 1107K7 PET
 RC DENVER 6026 PLD
 RC MS MONTANA 923 PLD
 MAY ROPER MAC 3023 ET
 MISS MAY PERFECT 4071 ET

CE	BW	WW	YW	Milk	MCE	MTNL	SC	TSI
4.3	0.7	25	52	15	5.2	28	1.0	200.21

BW	Adj WW	Ratio	Adj YW	Ratio
72				

- Safe to Ray's Power Surge B409.
- Polled bull calf born 8/26/17 by Ray's Power Surge.

9 MISS MAY COOLEY 5725

BD: 10/24/15 F1220599 HERD# 5925 POLLED

SCHURRTOP HCR RANCHER
COOLEY ROYCE 1107T39
 M745957 MS COOLEY S DUKE 1107N60

MAY MAG DUKE 5207
MISS MAY DUKE 9548
 F1124272 MISS MAY DUKE 4220

SCHURRTOP EASE 8953 PLD
 SCHURRTOP ML 6056 1184 P
 WCR SIR DUKE 17J ET P
 MS CCR TRADIT 1107K7 PET
 BR DUKE 261
 JC MAGGIE PLD
 FF DUKE 8006 ET
 MISS MAY VENDETTA 046

CE	BW	WW	YW	Milk	MCE	MTNL	SC	TSI
5.8	-0.2	24	49	16	7.4	28	0.9	198.30

BW	Adj WW	Ratio	Adj YW	Ratio
68				

- Safe to Ray's Power Surge B409.
- Outstanding Cooley Royce daughter. She will make a great addition to any herd.

10 MISS MAY SMOKESTER 5741

BD: 11/13/15 F1220603 HERD# 5741 POLLED

JDJ SMOKESTER J1377 P ET
MAY SMOKESTER 9512
 EM788769 JC MAGGIE PLD

RC WINNER 9403 PD ET
MISS MAY ALI WINNER 1231
 F1140805 MISS MAY MAC 8362

LHD CIGAR E46
 JD MS COMMANDER B309
 VCR SIR DUKE 914 PLD
 JC MAGNOLIA
 RC DENVER 6026 PLD
 RC MS MONTANA 923 PLD
 MAY ROPER MAC 3023 ET
 MISS MAY ALI 419

CE	BW	WW	YW	Milk	MCE	MTNL	SC	TSI
5.6	1.2	26	44	16	4.3	29	0.9	186.60

BW	Adj WW	Ratio	Adj YW	Ratio
76				

- Safe to Bamboo Gridmaker 3358 M847441.
- Thick and easily maintained. A cow with all the right ingredients.



11 MS MAY COOLEY ROYCE 3762
 May & Son BD: 09/30/13 F1189534 HERD# 3762 POLLED

SCHURRTOP HCR RANCHER
COOLEY ROYCE 1107T39
 M745957 MS COOLEY S DUKE 1107N60

SCHURRTOP EASE 8953 PLD
 SCHURRTOP ML 6056 1184 P
 WCR SIR DUKE 17J ET P
 MS CCR TRADIT 1107K7 PET

MAY ROPER MAC 3023 ET
MISS MAY MAC 8388
 F1123296 MISS MAY SHOWCUP 223 PLD

WCR SIR FA MAC 2244
 JC MAGGIE PLD
 DS ALI SHOWCUP PLD 825ET
 MISS MAY PINE 868

CE	BW	WW	YW	Milk	MCE	MTNL	SC	TSI
5.3	0.6	24	53	16	7.4	28	1.0	202.40

- Safe to Ray's Power Surge B409.
- Polled bull calf born 11/05/17 by Ray's Power Surge.
- Stout, thick, correct and strong all over. A cow with the sheer power and internal dimension to become a valuable asset.

BW	Adj WW	Ratio	Adj YW	Ratio
78				

13 MISS MAY WINNER 1243
 May & Son BD: 03/1/11 F1140810 HERD# 1243 POLLED

RC DENVER 6026 PLD
RC WINNER 9403 PD ET
 EM776984 RC MS MONTANA 923 PLD

THREE TREES WIND 0383 ET
 3H SKYE 37K
 RC MONTANA 644 POLLED
 RC MS DISTANCE7111POLLED

MAY ROPER MAC 3023 ET
MISS MAY MAC 8358
 F1123290 MISS MAY PERFECT 161 ET

WCR SIR FA MAC 2244
 JC MAGGIE PLD
 LHD MR PERFECT Y416
 JC MAGGIE PLD

CE	BW	WW	YW	Milk	MCE	MTNL	SC	TSI
5.4	0.4	20	35	11	3.3	21	0.8	179.63

- Safe to Ray's Power Surge B 409 M849259.
- Polled bull calf born 10/15/17 by Ray's Power Surge.
- Moderate framed, easy keeper, with tremendous milk flow by evidence of her good bull calf.

BW	Adj WW	Ratio	Adj YW	Ratio
74	585	92		



RC Winner 9403PD ET - Sire of Lots 13-14



Cooley Royce 1107T39 - Sire of Lots 8-9, 11-12, 15

12 MS MAY COOLEY ROYCE 3718
 May & Son BD: 08/28/13 F1189521 HERD# 3718 POLLED

SCHURRTOP HCR RANCHER
COOLEY ROYCE 1107T39
 M745957 MS COOLEY S DUKE 1107N60

SCHURRTOP EASE 8953 PLD
 SCHURRTOP ML 6056 1184 P
 WCR SIR DUKE 17J ET P
 MS CCR TRADIT 1107K7 PET

RC WINNER 9403 PD ET
MISS MAY SURE WINNER 1227
 F1140803 MISS MAY WIND 8354

RC DENVER 6026 PLD
 RC MS MONTANA 923 PLD
 MAY EAST WIND 3022 ET
 MISS MAY SCHURRTOP 6172

CE	BW	WW	YW	Milk	MCE	MTNL	SC	TSI
4.6	0.6	26	53	14	5.1	27	1.1	200.86

- Safe bred to Ray's Power Surge B409 M849259.
- A stout productive cow, full of volume and capacity.

BW	Adj WW	Ratio	Adj YW	Ratio
76				

14 MISS MAY SURE WINNER 1227
 May & Son BD: 02/17/11 F1140803 HERD# 1227 POLLED

RC DENVER 6026 PLD
RC WINNER 9403 PD ET
 EM776984 RC MS MONTANA 923 PLD

THREE TREES WIND 0383 ET
 3H SKYE 37K
 RC MONTANA 644 POLLED
 RC MS DISTANCE7111POLLED

MAY EAST WIND 3022 ET
MISS MAY WIND 8354
 F1123288 MISS MAY SCHURRTOP 6172

LT WYOMING WIND 4020 PLD
 JWV VICKIE E213 ET
 SCHURRTOP 5627
 JC MAGGIE PLD

CE	BW	WW	YW	Milk	MCE	MTNL	SC	TSI
5.1	1.0	26	45	10	4.4	23	0.8	187.61

- Safe to Bamboo Grid Maker 3358 M47441.
- Polled bull born 10/28/17 #7311 by Ray's Power Surge.

BW	Adj WW	Ratio	Adj YW	Ratio
78	673	106		

15 MS MAY COOLEY ROYCE 3808
 May & Son BD: 10/24/13 F1189544 HERD# 3808 POLLED

SCHURRTOP HCR RANCHER
COOLEY ROYCE 1107T39
 M745957 MS COOLEY S DUKE 1107N60

SCHURRTOP EASE 8953 PLD
 SCHURRTOP ML 6056 1184 P
 WCR SIR DUKE 17J ET P
 MS CCR TRADIT 1107K7 PET

LOF AUGUSTUS MAC 10 T
MISS MAY CIGAR DUKE 1245
 F1140812 MAY PERFECT DUKE 172 ET

LHD CIGAR E46
 DVCR LADY MAC 604 P ET
 VCR SIR DUKE 914 PLD
 MD MS PERFECT B40

CE	BW	WW	YW	Milk	MCE	MTNL	SC	TSI
4.0	0.9	29	58	16	6.1	31	1.2	203.41

- Safe to Bamboo Grid Maker 3358 M847441.
- Polled bull born 10/28/17 #7339.

BW	Adj WW	Ratio	Adj YW	Ratio
78				

16 MISS MAY WINNER DUKE 3142

BD: 03/23/13 F1174243 HERD# 3142 POLLED

RC DENVER 6026 PLD
RC WINNER 9403 PD ET
 EM776984 RC MS MONTANA 923 PLD

THREE TREES WIND 0383 ET
 3H SKYE 37K
 RC MONTANA 644 POLLED
 RC MS DISTANCE7111 POLLED

MAY ROPER MAC 3023 ET
RC WINNER 9403 PD ET
 F1125573 MAY ROPER MAC 3023 ET

WCR SIR FA MAC 2244
 JC MAGGIE PLD
 VCR SIR DUKE 914 PLD
 MD MS PERFECT B40

CE	BW	WW	YW	Milk	MCE	MTNL	SC	TSI
4.6	0.7	25	42	9	3.0	21	0.8	185.08

- Safe to Bamboo Grid Maker 3358 M847441.
- Sired by the great Rambur bull-Winner, a bull that worked great in the May program.

BW	Adj WW	Ratio	Adj YW	Ratio
76				



17 MISS MAY WINNER WIND 1223

BD: 02/09/11 F1140801 HERD# 1223 POLLED

RC DENVER 6026 PLD
RC WINNER 9403 PD ET
 EM776984 RC MS MONTANA 923 PLD

THREE TREES WIND 0383 ET
 3H SKYE 37K
 RC MONTANA 644 POLLED
 RC MS DISTANCE7111 POLLED

LT WYOMING WIND 4020 PLD
MISS MAY WIND 8396
 EF1124342 JC MAGGIE PLD

SCHURRTOP 5627
 LT CHAP'S LADY 2170P
 VCR SIR DUKE 914 PLD
 JC MAGNOLIA

CE	BW	WW	YW	Milk	MCE	MTNL	SC	TSI
4.7	1.5	25	42	9	4.1	22	0.9	183.86

- Safe to Bamboo Grid Maker 3358

BW	Adj WW	Ratio	Adj YW	Ratio
78	627	99		

18 MISS MAY WINNER 1249

BD: 03/05/11 F1140814 HERD# 1249 POLLED

RC DENVER 6026 PLD
RC WINNER 9403 PD ET
 EM776984 RC MS MONTANA 923 PLD

THREE TREES WIND 0383 ET
 3H SKYE 37K
 RC MONTANA 644 POLLED
 RC MS DISTANCE7111 POLLED

MAY ROPER MAC 3023 ET
MISS MAY MAC 8390
 F1123297 MISS MAY PERFECT 4071 ET

WCR SIR FA MAC 2244
 JC MAGGIE PLD
 LHD MR PERFECT Y416
 JC MAGGIE PLD

CE	BW	WW	YW	Milk	MCE	MTNL	SC	TSI
5.1	0.7	21	38	11	4.9	21	0.7	181.92

- Safe to Bamboo Grid Maker 3358

BW	Adj WW	Ratio	Adj YW	Ratio
78	602	95		

19 MS MAY COOLEY ROYCE 3712

BD: 08/23/13 F1189519 HERD# 3712 POLLED

SCHURRTOP HCR RANCHER
COOLEY ROYCE 1107T39
 M0000000 MS COOLEY S DUKE 1107N60

SCHURRTOP EASE 8953 PLD
 SCHURRTOP ML 6056 1184 P
 WCR SIR DUKE 17J ET P
 MS CCR TRADIT 1107K7 PET

RW WESTERN SPUR 691
MISS MAY SPUR MAC 1801
 F0000000 KC MS CORRECT 9420P

LT WESTERN SPUR 2061 PLD
 RLB MS TRACKER 404 P
 KC IMPRESSED 61 P ET
 KC MISS MAC 4206 ET

CE	BW	WW	YW	Milk	MCE	MTNL	SC	TSI
3.8	1.0	27	50	12	6.2	26	1.0	198.39

- Safe to Ray's Power Surge B409.

BW	Adj WW	Ratio	Adj YW	Ratio
82				

20 MISS MAY SHOW CIGAR 1257

BD: 04/01/11 F1140817 HERD# 1257 POLLED

LHD CIGAR E46
MAY GOLD CIGAR 4099 ET
 M0000000 JWK GENEVA G096 ET

LHD MR PERFECT Y416
 LHD MS CLASSIC BELL X613
 ASC ELIMINATOR 032
 JWK MISTI E156 ET

JWK VENDETTA G221 ET
MISS MAY VENDETTA 4240
 F0000000 MISS MAY SHOWCUP 224 PLD

VCR SIR DUKE 914 PLD
 JWK VANESSA D029 ET
 DS ALI SHOWCUP PLD 825ET
 MISS MAY PINE 921

CE	BW	WW	YW	Milk	MCE	MTNL	SC	TSI
6.5	1.0	23	36	14	9.7	26	0.8	179.13

- Safe to Bamboo Grid Maker 3358

BW	Adj WW	Ratio	Adj YW	Ratio
86	588	100		

21 MISS MAY PRESIDENT 4511

BD: 02/25/14 F1191407 HERD# 3804 POLLED

CJC MR PRESIDENT T122
MAY WAYLON 9618
 EM785972 JC MAGGIE PLD

LHD CIGAR E46
 CJC MS DAYLIGHT K1662
 VCR SIR DUKE 914 PLD
 JC MAGNOLIA

LOF AUGUSTUS MAC 10 T
MISS MAY MAC 1316
 F1152300 MISS MAY MAC 3015 ET

LHD CIGAR E46
 DVCR LADY MAC 604 P ET
 WCR SIR FA MAC 2244
 JC MAGGIE PLD

CE	BW	WW	YW	Milk	MCE	MTNL	SC	TSI
2.7	3.2	36	60	13	5.1	31	0.7	198.01

- Safe to Bamboo Grid Maker 3358 M847441.
- An attractive, easy keeping female, with an ideal udder and from a "No miss" cow family.

BW	Adj WW	Ratio	Adj YW	Ratio
76	644	108		



LHD Cigar E46 - Grandsire of Lot 20



22 MS MAY COOLEY ROYCE 3804
 BD: 10/18/13 F1189543 HERD# 3804 POLLED

SCHURRTOP HCR RANCHER
COOLEY ROYCE 1107T39
 M745957 MS COOLEY S DUKE 1107N60

SCHURRTOP EASE 8953 PLD
 SCHURRTOP ML 6056 1184 P
 WCR SIR DUKE 17J ET P
 MS CCR TRADIT 1107K7 PET

MAY ALI MARK 1227 ET
MISS MAY ALI 419
 F1011057 MISS MAY VENDETTA 076

LHD ALI MARK T214
 P-3 LADY PERFECT 7-1G
 JWK VENDETTA G221 ET
 MISS MAY EXCELSIOR 306

CE	BW	WW	YW	Milk	MCE	MTNL	SC	TSI
6.8	-0.2	21	48	16	8.5	26	1.1	198.30

• P.E. 5/11/18 to 9/07/18 to Bamboo Grid Maker 3358.	BW	Adj WW	Ratio	Adj YW	Ratio
	76				

- Polled heifer calf born 03/06/18 by Ray's Power Surge.
- One you can't miss in the pasture. A beautiful piece of work and backed by a strong and highly productive cow family.

23 MISS MAY ROYCE 4260
 BD: 09/15/14 F1210739 HERD# 4260 POLLED

SCHURRTOP HCR RANCHER
COOLEY ROYCE 1107T39
 M0000000 MS COOLEY S DUKE 1107N60

SCHURRTOP EASE 8953 PLD
 SCHURRTOP ML 6056 1184 P
 WCR SIR DUKE 17J ET P
 MS CCR TRADIT 1107K7 PET

LT WYOMING WIND 4020 PLD
MISS MAY WIND 8396
 F0000000 JC MAGGIE PLD

SCHURRTOP 5627
 LT CHAP'S LADY 2170P
 VCR SIR DUKE 914 PLD
 JC MAGNOLIA

CE	BW	WW	YW	Milk	MCE	MTNL	SC	TSI
5.8	0.9	26	53	14	7.6	27	1.2	201.71

• P.E. 5/11/18 to 9/07/18 Ray's Power Surge.	BW	Adj WW	Ratio	Adj YW	Ratio
	76				

- Polled bull calf born 3/10/18 by Ray's Power Surge.

24 MS MAY COOLEY ROYCE 3738
 BD: 09/10/13 F1189525 HERD# 3738 POLLED

SCHURRTOP HCR RANCHER
COOLEY ROYCE 1107T39
 M745957 MS COOLEY S DUKE 1107N60

SCHURRTOP EASE 8953 PLD
 SCHURRTOP ML 6056 1184 P
 WCR SIR DUKE 17J ET P
 MS CCR TRADIT 1107K7 PET

RC WINNER 9403 PD ET
MISS MAY WINNER 1249
 F1140814 MISS MAY MAC 8390

RC DENVER 6026 PLD
 RC MS MONTANA 923 PLD
 MAY ROPER MAC 3023 ET
 MISS MAY PERFECT 4071 ET

CE	BW	WW	YW	Milk	MCE	MTNL	SC	TSI
4.1	0.7	24	50	15	5.3	26	1.0	198.48

• P.I. 5/11/18 to 9/07/18 to Bamboo Grid Maker 3358.	BW	Adj WW	Ratio	Adj YW	Ratio
	76				

- Polled heifer calf born 3/17/18 by Ray's Power Surge B409.

25 MISS MAY COOLEY LUNCH 6694
 BD: 05/02/16 F1227086 HERD# 6694 POLLED

VPI FREE LUNCH 708T
BAMBOO/VPI FULL COURSE 214Z
 M817325 JWK TIARA H116

LT RIO BLANCO 1234 P
 VPI MISS DUCHESS 404 P
 VCR SIR DUKE 914 PLD
 JWK TIARA F166 ET

COOLEY ROYCE 1107T39
MS MAY COOLEY ROYCE 3808
 F1189544 MISS MAY CIGAR DUKE 1245

SCHURRTOP HCR RANCHER
 MS COOLEY S DUKE 1107N60
 LOF AUGUSTUS MAC 10 T
 MAY PERFECT DUKE 172 ET

CE	BW	WW	YW	Milk	MCE	MTNL	SC	TSI
4.8	1.1	31	63	14	6.8	29	1.5	209.14

• P.E. 5/11/18 to 9/07/18 to May Cooley Royce 5721 M881588.	BW	Adj WW	Ratio	Adj YW	Ratio
	74	616	100		

- Polled heifer calf born 3/18/18 by May Cooley Royce

26 MS MAY COOLEY ROYCE 3744
 BD: 09/10/13 F1189527 HERD# 3744 POLLED

SCHURRTOP HCR RANCHER
COOLEY ROYCE 1107T39
 M745957 MS COOLEY S DUKE 1107N60

SCHURRTOP EASE 8953 PLD
 SCHURRTOP ML 6056 1184 P
 WCR SIR DUKE 17J ET P
 MS CCR TRADIT 1107K7 PET

MAY ROPER MAC 3023 ET
MISS MAY MAC 8332
 F1123754 MISS MAY WIND 5226

WCR SIR FA MAC 2244
 JC MAGGIE PLD
 MAY COOL WIND 1228 P ET
 MISS MAY VENDETTA 062

CE	BW	WW	YW	Milk	MCE	MTNL	SC	TSI
6.2	0.3	23	50	15	7.2	26	1.1	199.81

• P.E. 5/11/18 to 9/07/18 to Ray's Power Surge B409.	BW	Adj WW	Ratio	Adj YW	Ratio
	76				

- Polled heifer calf born 4/19/18 by Ray's Power Surge.

27 MS MAY COOLEY ROYCE 3754
 BD: 09/27/13 F1189530 HERD# 3754 POLLED

SCHURRTOP HCR RANCHER
COOLEY ROYCE 1107T39
 M745957 MS COOLEY S DUKE 1107N60

SCHURRTOP EASE 8953 PLD
 SCHURRTOP ML 6056 1184 P
 WCR SIR DUKE 17J ET P
 MS CCR TRADIT 1107K7 PET

LT SILVER DISTANCE 5342P
MISS MAY DISTANCE 1817
 F1140955 KC MS PROFIT MAKER 9567P

LT SILVER YIELD 3196 P
 LT MATTIE 9026 POLLED
 ACE-ORR MAKERS MARK 689
 KC MISS IMPRESSED 5967 P

CE	BW	WW	YW	Milk	MCE	MTNL	SC	TSI
0.9	1.7	31	63	18	4.1	34	1.0	210.71

• PE 5-11-18 to 9-7-18 to Ray's Power Surge B409.	BW	Adj WW	Ratio	Adj YW	Ratio
	86				

- Polled bull calf born 2-21-18 by Ray's Power Surge

28 MISS MAY ALI VANESSA 5773
 BD: 10/11/15 F1220608 HERD# 5773 POLLED

OHF ALI MARK AGAIN H111 ET
OHF ALI MAN K831
 M798280 OHF VANESSA SPUR F924

LHD ALI MARK T214
 JWK GALLICURCI G072 ET
 LT WESTERN SPUR 2061 PLD
 JWK VANESSA D029 ET

LHD MR PERFECT Y416
MISS MAY PERFECT 4072 ET
 F1019550 LHD MS SHOWME OFF W157

WCR SIR PERFECTION 734
 LHD MS SHOWME OFF W159
 SPAINS SHOW ME POLLED
 LHD MS BAMARK 259-T277

CE	BW	WW	YW	Milk	MCE	MTNL	SC	TSI
1.6	1.7	24	39	8	4.2	20	0.8	184.40

• PE 5-11-18 to 9-7-18 to Ray's Power Surge B409.	BW	Adj WW	Ratio	Adj YW	Ratio
	80				

- Polled bull calf born 2-7-18 by Bamboo Gridmaker 3358

29 MISS MAY ROYCE 4296
 BD: 10/10/14 F1210745 HERD# 4296 POLLED
 SCHURRTOP HCR RANCHER
COOLEY ROYCE 1107T39
 M745957 MS COOLEY S DUKE 1107N60
 SCHURRTOP EASE 8953 PLD
 SCHURRTOP ML 6056 1184 P
 WCR SIR DUKE 17J ET P
 MS CCR TRADIT 1107K7 PET
 BOW DAKOTA WIND 2074MPOL
MISS MAY MAGGIE WIND 8328
 EF1123299 JC MAGGIE PLD
 LT DAKOTA WIND 7158 PLD
 BOW DUCHESS 313C POLL
 VCR SIR DUKE 914 PLD
 JC MAGNOLIA

CE	BW	WW	YW	Milk	MCE	MTNL	SC	TSI
4.8	1.2	27	55	16	6.6	30	1.0	203.98

• P.E. 5/11/18 to 9/07/18 to Ray's Power Surge B409. Polled heifer calf born 3/04/18 by Ray's Power Surge.

BW	Adj WW	Ratio	Adj YW	Ratio
78				

30 MISS MAY ROYCE 4200
 BD: 10/29/14 F1210722 HERD# 4200 POLLED
 SCHURRTOP HCR RANCHER
COOLEY ROYCE 1107T39
 M745957 MS COOLEY S DUKE 1107N60
 SCHURRTOP EASE 8953 PLD
 SCHURRTOP ML 6056 1184 P
 WCR SIR DUKE 17J ET P
 MS CCR TRADIT 1107K7 PET
 RC WINNER 9403 PD ET
MISS MAY WINNER 1243
 F1140810 MISS MAY MAC 8358
 RC DENVER 6026 PLD
 RC MS MONTANA 923 PLD
 MAY ROPER MAC 3023 ET
 MISS MAY PERFECT 161 ET

CE	BW	WW	YW	Milk	MCE	MTNL	SC	TSI
3.1	1.0	24	50	14	3.6	26	1.1	197.87

• P.E. 5/11/18 to 9/07/18 to Bamboo Grid Maker 3358 M847441.
 • Polled heifer calf born 2/28/18 by Ray's Power Surge.

BW	Adj WW	Ratio	Adj YW	Ratio
76				

31 COMMERCIAL CHAROLAIS FEMALE
 BD: 02-24-16
 • Bred to May Surge Winner 6715 (M897672).

32 COMMERCIAL CHAROLAIS FEMALE
 BD: 03-08-16
 • Bred to May Surge Winner 6715 M897672.

Vannoy Charolais • Lots 33-35

33 EATONS WHITNEY 20781 POLL
 BD: 03/29/12 F1161938 HERD# 20781 POLLED
 EATONS AMBUSH 4009
EATONS IMPACT 7032
 M745158 EATONS AUGUSTA P 5954
 EATONS IMPACT 2034
 EATONS MISS YERA 2776 TW
 EATONS VALUE 3195
 EATONS AUGUSTA 1750
 EATONS CONFIRM 9266
EATONS WHITNEY 1851
 F935687 EATONS MISS WHITNEY 5570
 EATONS AFFIRMATION 7025
 EATONS MISS SHANNON 2671
 EATONS SUPERIOR 3188
 EATONS MISS WHITNEY 3539

CE	BW	WW	YW	Milk	MCE	MTNL	SC	TSI
6.9	-2.7	9	27	9	6.3	13	0.5	181.84

• Polled heifer calf born 2/12/17, BW 72# by OHF Maxs 5903 M872248.
 • Safe 4 months to OHF Maxs 5903. Bred in the Eaton herd.

BW	Adj WW	Ratio	Adj YW	Ratio
86	489	90	727	89

34 JDS MISS CHARTER 552 P
 BD: 02/11/15 F1196894 HERD# 552 POLLED
 HCR FLASH 5074 POLLED
ONE PENNY BLANCO FLASH 6424
 M731925 DOUBLE-H BOBSY 424P
 HCR EXODUS 9033 POLLED
 MISS HCR MAC 2015 POLLED
 LT RIO BLANCO 1234 P
 DOUBLE-H DANCEWITHME209M
 JCR/LT CHARTER 8110 PET
JCR MISS CHARTER 146 P
 F1138187 JCR MS ASSERTION 612 P
 WCR SIR FAB MAC 809
 VCR MISS DUCHESS 357 PLD
 LT ASSERTION 1277 P
 ACE MS DUKE 7717-4717 ET

CE	BW	WW	YW	Milk	MCE	MTNL	SC	TSI
7.8	-2.1	27	64	7	0.8	21	0.7	222.73

• Safe to OHF Maxs 5903 M872248. Will calve around sale time.

BW	Adj WW	Ratio	Adj YW	Ratio
79				

35 JDS MS MAKER 553 P
 BD: 02/12/15 F1196843 HERD# 553 POLLED
 M6 PROFIT MAKER 3095 P ET
JDS PROFIT MAKER 037 P
 M792053 JDS COURTNEY P 2230 ET
 LHD CIGAR E46
MISS MAY CIGAR 9510
 EF1124344 JC MAGGIE PLD
 M6 GRID MAKER 104 PET
 M6 MS BUDSMYDAD 924 PLD
 VCR SIR DUKE 914 PLD
 HBR LADY GI 207 P ET
 LHD MR PERFECT Y416
 LHD MS CLASSIC BELL X613
 VCR SIR DUKE 914 PLD
 JC MAGNOLIA

CE	BW	WW	YW	Milk	MCE	MTNL	SC	TSI
7.9	0.2	27	46	14	7.2	27	0.9	189.99

• Safe to OHF Maxs 5903, son of JFJ Maximo A18P.
 • Great females abound in her pedigree along with great producing sires.

BW	Adj WW	Ratio	Adj YW	Ratio
70				



One Penny Blanco Flash 6424 - Sire of Lot 34

Mike Davis • Lots 36-37

36 BMD BAMBOO GALLIE 204

BD: 07/11/17 F1242402 HERD# 722 POLLED

VCR SIR DUKE 914 PLD
BAMBOO DUKE 157 ET
 EM834002 GP MS ALI M76 ET

WCR SIR DUKE 761
 WCR MISS MAC IV 534
 LHD ALI MARK T214
 JWK DIXIE D088 ET

KTR MR SMOKESTER 260 ET
BMD SMOKESTER GALLIE 605
 F1150050 KTR MS GALLIE KING G

JDJ SMOKESTER J1377 P ET
 JWK GALLICURCI G072 ET
 HEP KING GRAZER 25A
 JWK GALLICURCI G072 ET

CE	BW	WW	YW	Milk	MCE	MTNL	SC	TSI
8.5	0.4	32	55	15	6.8	31	0.9	197.31

- Open heifer. Ready to breed this fall.
 - This heifer traces back to 914, Smokster and Gallicurci.
- | BW | Adj WW | Ratio | Adj YW | Ratio |
|----|--------|-------|--------|-------|
| 82 | | | | |

37 BMD LEDGERS FRESH AIR 509

BD: 08/11/17 F1249302 HERD# 509 POLLED

LT BLUEGRASS 4017 P
LT LEDGER 0332 P
 M791626 LT BRENDA 6120 PLD

LT ASSERTION 1277 P
 LT PEARL'S BREEZE 2236 P
 LT RIO BRAVO 3181 P
 LT BRENDA'S EASE 3055PLD

M6 FRESH AIR 8165 P ET
BMD FRESH AIR 817
 F1202950 WELCOME GROVE WINDY 817

THREE TREES WIND 0383 ET
 SR LADY EASE 914 ET
 NF RL ROCCO 3030 PLD
 CMF 265 WINDY 349N

CE	BW	WW	YW	Milk	MCE	MTNL	SC	TSI
5.4	0.1	33	65	8	6.0	24	1.4	211.48

- Open heifer.
 - There is a very bright future for this powerful female with an impeccable pedigree.
- | BW | Adj WW | Ratio | Adj YW | Ratio |
|----|--------|-------|--------|-------|
| 74 | | | | |

Thomas Turner • Lots 38-45

38 TLT MS XMATE 1643 P

BD: 11/09/16 F1236445 HERD#1643 POLLED

RC DENVER 6026 PLD
RC X MATE 040 PD
 M792740 RC MS SIGNATURE 3315 PLD

THREE TREES WIND 0383 ET
 3H SKYE 37K
 SCHURRTOP RC SIGNATURE
 RC MS BUD 410 POLLED

TLT BUBBIE 1104 P
TLT CAROLINE 1347 P
 F1181577 THREE TREESHARMONY4314ET

CF CIGAR 1069 PLD ET
 TLT CAROLINE 920 P
 SKYMONT FLASH 5030
 MISS KEY HARMONY 303H

CE	BW	WW	YW	Milk	MCE	MTNL	SC	TSI
5.0	0.9	27	51	12	3.8	26	0.9	196.27

- Bred heifer.
 - PE 1-01-18 to 9-12-18 to MD Weiss A1021 M843510.
- | BW | Adj WW | Ratio | Adj YW | Ratio |
|----|--------|-------|--------|-------|
| 68 | | | | |

40 TLT MS MAGGIE 1632 P

BD: 09/03/16 F1236438 HERD# 1632 POLLED

LHD GUARANTEE P632
TLT GUARANTEE 1414 P
 M849096 TLT MACY 1006 P

LHD MR PERFECT Y416
 LHD MS SUNNYDAY M1239
 THREE TREES 1107F7 2753ET
 WEAVER HAVANA LADY 0283

KEYS MCHENRY 24M
MISS MAY MCHENRY 8372
 EF1126033 JC MAGGIE PLD

KEYS HANDYMAN PLD 255H
 MISS KEY DIANA 102G PL
 VCR SIR DUKE 914 PLD
 JC MAGNOLIA

CE	BW	WW	YW	Milk	MCE	MTNL	SC	TSI
7.8	0.6	33	56	12	9.6	28	1.0	199.49

- Bred heifer.
 - PE 1-01-18 to 9-12-18 to MD Weiss A1021 M843510.
- | BW | Adj WW | Ratio | Adj YW | Ratio |
|----|--------|-------|--------|-------|
| 72 | | | | |

42 S & K WHITE GOLD

BD: 11/02/12 F1162993 HERD# 1622 POLLED

LT RIO BRAVO 3181 P
DUKE'S BRAVO 9921
 EM797437 M6 MS DUKE 136 PLD

LT RIO BLANCO 1234 P
 LT 7N OF DUKE 9083 PLD
 VCR SIR DUKE 914 PLD
 M6 MS IMPRESSIVE 8380PLD

LHD CIGAR E46
HAYDEN T162
 F1070155 PLT MS TRADITION 6172 P

LHD MR PERFECT Y416
 LHD MS CLASSIC BELL X613
 WCR SIR TRADITION 066
 PLT MS DUCHESS 617 PLD

CE	BW	WW	YW	Milk	MCE	MTNL	SC	TSI
1.2	2.9	36	62	13	2.8	31	0.8	203.94

- PE 9-1-17 to 5-1-18 to MD Weiss A1021 M843510 and MD Weiss A1021 M843510 and Santa Gertrudis Bull.
- | BW | Adj WW | Ratio | Adj YW | Ratio |
|----|--------|-------|--------|-------|
| 84 | 734 | 100 | | |

39 TLT MS WEISS 1649 P

BD: 12/05/16 F1237958 HERD# 1649 POLLED

LT LONG DISTANCE 9001 PLD
MD WEISS A1021
 M843510 MD MS PROSON Y1426

LT SILVER DISTANCE 5342P
 LT BELLE 7026 P
 LHD PROMARK SON U3123
 MD MS CIGARLITE P211

LHD GUARANTEE P632
TLT MS GUARANTEE 1407 P
 F1184964 TLT CAROLINE 920 P

LHD MR PERFECT Y416
 LHD MS SUNNYDAY M1239
 GP DUKE M23 ET
 LT NORA 1126 PLD

CE	BW	WW	YW	Milk	MCE	MTNL	SC	TSI
8.6	0.4	29	49	10	7.4	24	0.7	192.48

- Bred heifer.
 - PE 1-01-18 to 9-12-18 to MD Weiss A1021 (M843510).
- | BW | Adj WW | Ratio | Adj YW | Ratio |
|----|--------|-------|--------|-------|
| 74 | | | | |

41 MISS JFA KING KAT

BD: 02/15/15 F2221239 HERD# A953 POLLED

NWMSU DOC SILVER 362 PLD
HCR SILVER KING 9070 PLD
 M777366 MISS HCR RANDI 6053 PLD

SS MONTANA SILVER
 NWMSU DOLORES ET 0035
 SCHURRTOP HCR RANCHER
 MISS HCR REFLECTION 3130

HCR PRIME TIME 3016 PLD
MISS JFA ROCKIE 782
 F1043496 MISS JFA FLASH HELENE

WCR PRIME TIME 908 P
 MISS HCR SAGE 8072 PLD
 HCR FLASH 7115 POLLED
 MISS JFA CASTLE SHELLY

CE	BW	WW	YW	Milk	MCE	MTNL	SC	TSI
5.2	0.8	31	56	6	6.3	21	0.5	201.34

- PE 2-19-18 to 5-1-18 to MD Weiss A1021 (843510 and MD Weiss A1021 M843510 and Santa Gertrudis Bull.
- | BW | Act WW | Ratio | Adj YW | Ratio |
|----|--------|-------|--------|-------|
| 81 | 790 | | | |

43 CLINK MS 236 SANDMAN 045

BD: 09/29/12 F1171085 HERD# 236 POLLED

BALDRIDGE KOJACK 29K
TA MR SANDMAN BY ACE 809 P
 M779553 PEEK MISS NANCY 604P

BALDRIDGE FASTTRACK 82F
 BALDRIDGE ELVIRA 95H
 THREE TREES WIND 0383 ET
 ORR'S MS NANCY 418

WCR SIR TRADITION 066
C LINK MS 045 TRADITION 261
 EF1138238 LINK MS 261 KAT 156 PET

WCR SIR TRADITION 4402
 IDEAL 809 45 OF 25
 WCR SIR FA MAC 2244
 JWK MISTI E156 ET

CE	BW	WW	YW	Milk	MCE	MTNL	SC	TSI
10.8	-1.3	30	58	12	8.8	27	0.4	205.80

- PE 9-1-17 to 5-1-18 to MD Weiss A1021 M843510 and MD Weiss A1021 M843510 and Santa Gertrudis Bull.
- | BW | Adj WW | Ratio | Adj YW | Ratio |
|----|--------|-------|--------|-------|
| 65 | 630 | 102 | 856 | 101 |

44 VCC ANN 216

BD: 05/24/12 F1213944 HERD# 216 POLLED

SC SHADOWBROOK 449 ET
HBR SHADOWBROOK 725 P
 M771164 HBR LADY MACK 53 P

LT POLLED VALUE 9089
 JWK TIARA H116
 HBR BIG MACK 797 P
 HBR LADY MAGNUM 665 P ET

HVR DIAMOND CAT 204

RA BIG CAT 9017 PLD
 WWCR REVA 6123
 HVR VECTORO 4148
 HVR MISS PLEASURE

VCC ANN 868

F1099892 HVR MISS PLEASURE 0198

CE	BW	WW	YW	Milk	MCE	MTNL	SC	TSI
3.3	1.5	26	47	7	6.1	20	0.7	187.54

• PE 9-1-17 to 5-1-18 to MD Weiss A1021 M843510 and MD Weiss A1021 M843510 and Santa Gertrudis Bull.

BW	Adj WW	Ratio	Adj YW	Ratio
75	640	100		

45 TIT X MATE 1730 P

BD: 05/5/17 M897340 HERD# 1730 POLLED

RC DENVER 6026 PLD
RC X MATE 040 PD
 M792740 RC MS SIGNATURE 3315 PLD

THREE TREES WIND 0383 ET
 3H SKYE 37K
 SCHURRTOP RC SIGNATURE
 RC MS BUD 410 POLLED

THREE TREES1107F7 2753ET

CCR SCHURSHOT 1107F7 PET
 JWK RUBY E205 ET
 LT WYOMING WIND 4020 PLD
 THREE TREES NANCY 8121 ET

TLT MACY 1003 P

F1121506 THREE TREES NANCY 2368 ET

CE	BW	WW	YW	Milk	MCE	MTNL	SC	TSI
2.8	1.9	25	54	16	1.4	29	1.1	199.68

BW	Adj WW	Ratio	Adj YW	Ratio
83				

Jay Buzhardt • Lots 46-47

46 BFM AMERICAN BEAUTY B29 P

BD: 11/17/14 F1190946 HERD# B29 POLLED

WDZ BUD 434 PLD ET
WC CCC BUD HEAVY 903 PLD ET
 EM773430 RCR MS BESS 6532

RC BUDSMYDAD 225 POLLED
 WAL-MAR PENNY STOCK6012P
 MCF ABC F10 PP ET
 RCR MS CAMEO F180

VCR SIR DUKE 914 PLD

VCR SIR DUKE 761
 WCR MISS MAC IV 534
 LC BUSINESS 06P
 SC SHADOWBROOK 83 ET

BFM AMERICAN MAID Z09

EF1153501 HHP MISS AMERICAN 613

CE	BW	WW	YW	Milk	MCE	MTNL	SC	TSI
8.4	-0.6	29	55	9	5.8	23	1.4	201.42

• Polled bull calf born 6-27-18 by WC Injector 3N2 M844172.

BW	Adj WW	Ratio	Adj YW	Ratio
76	675	100	912	100

• He is a Ledger son. P.E. to WC Injector 3N2 M844172

47 BFM B30 NANCY P ET

BD: 12/05/14 EF1194353 HERD# B30 POLLED

SCHURRTOP 5627
LT WYOMING WIND 4020 PLD
 M411450 LT CHAP'S LADY 2170P

WCR SIR DUKE 783
 MISS SUGAR VALLEY 908
 LT UNLIMITED CHAPS 0109
 LT PRAIRIE MAIDEN 8095

SKYMONT EASE 2078

LT UNLIMITED EASE 9108
 MISS WC ROYAL SAMMY 114
 WCR SIR FA MAC 2244
 WCR MISS DUKE 8742

THREE TREES NANCY 8121ET

EF842171 WCR MISS MAC IV 5138 ET

CE	BW	WW	YW	Milk	MCE	MTNL	SC	TSI
7.8	-0.2	27	54	6	7.4	20	1.2	203.03

• P.E to WC Injector 3N2 M844172.

BW	Adj WW	Ratio	Adj YW	Ratio
88	709	100	939	100

• High selling bull in 2015 S.C. sale.

Faraway Cattle Co. • Lots 48-54

48 EJS MS PERFECTION 7702 ET

BD: 01/25/07 EF1061270 HERD# 7702 POLLED

WCR SIR FAB MAC 809
WCR SIR FA MAC 2244
 M234430 WCR MISS CENTURY 920 TWN

FRISBIE MAC POLLED 257
 MISS LW FA BINGO 229
 XXI CENTURY
 MISS KENO 333

WCR SIR PERFECTION 9019

HCR PERFECTION 5142 POLL
 WCR MISS MAC IV 8501
 BR DUKE 261
 WCR MISS CENTURY 283

WCR MISS PERFECTION655ET

F774221 WCR MISS DUKE 8742

CE	BW	WW	YW	Milk	MCE	MTNL	SC	TSI
0.3	1.2	25	50	0	6.6	13	0.2	194.28

• Due to calve around 10-01-18 to Faraway Seminole 23C M862323.

BW	Adj WW	Ratio	Adj YW	Ratio
79	655	99		

• Collectors item and own daughter of Mac 2244. Beautiful cow, perfect type, sound, with a great udder.



Lot 48

See you at the sale!

September 15, 2018
 Knoxville Livestock Center, Knoxville, TN

49 HEP MISS JOAN 43W

BD: 10/08/09 F1109975 HERD# 43W POLLED

LC BUSINESS 06P
SC SHADOWBROOK 484 ET
 M690415 RSCR CRYSTAL 7J P

HEP SERIOUS BUSINESS 5ET
 HEP MISS JOAN 68C
 VCR SIR DUKE 914 PLD
 BALDRIDGE CRYSTAL 26G

HEP POLLED MAC 8 ET
HEPL MISS JOAN 46K ET
 F934942 HEP MISS JOAN 25D ET

HCR MAC 9157 POLLED
 HEP MISS JOAN 17W
 VCR SIR DUKE 914 PLD
 MISS ROSIE PRISE 382 PLD

CE	BW	WW	YW	Milk	MCE	MTNL	SC	TSI
8.7	1.2	39	67	19	10.3	39	0.9	209.30

• Due this fall to Faraway Seminole 23C M862323.

BW	Adj WW	Ratio	Adj YW	Ratio
74				

• From the famous Rosie Prise family that produced King Grazer.

50 FARAWAY ROSIE 43D

BD: 08/01/16 F1234111 HERD# 43D POLLED

FARAWAY CHICO 4T PLD ET
FARAWAY SHOSHONE 52Y
 EM809548 M6IMS 225 SUPREME 0236ET

M6 GRID MAKER 104 PET
 WDZ LUSCIOUS LADY4008PET
 RC BUDSMYDAD 225 POLLED
 MOORES MS MARK 7338

SC SHADOWBROOK 484 ET
HEP MISS JOAN 43W
 F1109975 HEPL MISS JOAN 46K ET

LC BUSINESS 06P
 RSCR CRYSTAL 7J P
 HEP POLLED MAC 8 ET
 HEP MISS JOAN 25D ET

CE	BW	WW	YW	Milk	MCE	MTNL	SC	TSI
7.5	0.7	30	51	14	7.5	29	0.7	194.80

• She is due around sale day to Faraway Seminole 23C M862323.

BW	Adj WW	Ratio	Adj YW	Ratio
65	540	100		

• Dam sells as lot 49.

52 FARAWAY JOAN 45E

BD: 07/16/17 F1239667 HERD# 45E POLLED

FARAWAY CHICO 4T PLD ET
FARAWAY SHOSHONE 52Y
 EM809548 M6IMS 225 SUPREME 0236ET

M6 GRID MAKER 104 PET
 WDZ LUSCIOUS LADY4008PET
 RC BUDSMYDAD 225 POLLED
 MOORES MS MARK 7338

KEYS ALL STATE 149X
FARAWAY JOAN 4A
 F1201919 FARAWAY JOAN 4Y

KEYS SPECIALIST 18U
 MISS KEY MEG 2T
 FARAWAY CHICO 4T PLD ET
 BJR MISS EASY PRO 417PET

CE	BW	WW	YW	Milk	MCE	MTNL	SC	TSI
2.7	0.7	27	45	6	2.9	20	0.9	191.66

• Open heifer.

BW	Adj WW	Ratio	Adj YW	Ratio
83	533	100		

• She is out of the big bodied Key's All State cow. This female is out the Joan family, and we have several staying in our herd.

54 FARAWAY RAPPAHANNOCK 43E

BD: 06/27/17 M891851 HERD# 43E POLLED

FARAWAY CHICO 4T PLD ET
FARAWAY SHOSHONE 52Y
 EM809548 M6IMS 225 SUPREME 0236ET

M6 GRID MAKER 104 PET
 WDZ LUSCIOUS LADY4008PET
 RC BUDSMYDAD 225 POLLED
 MOORES MS MARK 7338

SC SHADOWBROOK 484 ET
HEP MISS JOAN 43W
 F1109975 HEPL MISS JOAN 46K ET

LC BUSINESS 06P
 RSCR CRYSTAL 7J P
 HEP POLLED MAC 8 ET
 HEP MISS JOAN 25D ET

CE	BW	WW	YW	Milk	MCE	MTNL	SC	TSI
7.5	0.7	30	51	14	7.5	29	0.7	194.87

• Dam is a reliable Pate cow who is triple bred to 914 and double bred to the Rosie Prise cow family, a family noted for decades of performance on grass.

BW	Adj WW	Ratio	Adj YW	Ratio
82	600	100	1048	100



VCR Sir Duke 914 PLD - Grandsire of Lot 49

51 FARAWAY MISS 110C

BD: 06/04/15 F1201852 HERD# 110C POLLED

FARAWAY CHICO 4T PLD ET
FARAWAY SHOSHONE 52Y
 EM809548 M6IMS 225 SUPREME 0236ET

M6 GRID MAKER 104 PET
 WDZ LUSCIOUS LADY4008PET
 RC BUDSMYDAD 225 POLLED
 MOORES MS MARK 7338

FARAWAY ROOSTER 417X
FARAWAY MISS 110Z
 F1147692 FARAWAY MISS W110 PLD ET

FARAWAY CHICO 4T PLD ET
 THREE TREES RUBY 1020
 M6 GRID MAKER 104 PET
 TO ROYAL TRADITION2010ET

CE	BW	WW	YW	Milk	MCE	MTNL	SC	TSI
5.9	1.0	29	50	11	5.3	26	0.7	196.27

• P.E. to Faraway Seminole 23C M862323 from 5-01-18 to 7-01-18, then exposed to Faraway Motor 110E M889190.

BW	Adj WW	Ratio	Adj YW	Ratio
72	607	104		

• Will pregnancy check before sale.

53 WCR MISS BUD LITE 077

BD: 01/10/10 F1133110 HERD# 077 POLLED

WATJE BUD 14M POLLED
MS G-BAR BUD 022S P
 M739920 MS G-BAR NORA'SDELIGHTP6

RC BUDSMYDAD 225 POLLED
 WATJE BELLE 140K
 G-BAR DUKES DELIGHT K06
 BALDRIDGE NORA 5H

WCR VISION 2000
WCR MISS VISION 209 TW
 F959978 WCR MISS PARIS 209 POLL

TTF UNDENIABLE PS
 WCR MISS DELL 463
 CHURCHILL
 MISS BLACKHILL 56

CE	BW	WW	YW	Milk	MCE	MTNL	SC	TSI
0.8	2.9	26	46	8	4.0	21	0.5	

• Bull calf born 5-03-18 to Faraway Seminole 23C M862323.

BW	Adj WW	Ratio	Adj YW	Ratio
80	632	101		

• P.E. to Faraway Motor 110E M889190 from 7-01-18 to 9-12-18.

• This heifer is out of our favorite cow that we bought from Eatons.



Lot 54

Ray's Charolais Farm • Lots 55-59

55 VCR MISS SILVERMAN 259 P

BD: 2/13/12 F1154628 HERD# 259 POLLED

LT SILVER EDGE 2289 PLD
VCR SIR SILVERMAN 508 P
 M703901 VCR MISS MAC IV 224 ET P

BALDRIDGE FASTTRACK 82F
VCR MISS SHOOTER 35 PLD
 F977443 VMC MISS COOL MAC

SS MONTANA SILVER
 LT DUCHESS OF MAC 7076 P
 WCR SIR FA MAC 2244
 BARA MS IMPRESSIVE 80H

LT UNLIMITED EASE 9108
 BALDRIDGE SWEETHEART 53D
 DA MR MORRISON 125
 VMC MISS COOL MAC 27

CE	BW	WW	YW	Milk	MCE	MTNL	SC	TSI
7.4	-0.6	31	54	8	4.2	23	0.6	193.16

- Polled heifer calf born 2-22-18 by Ray's Campbell C514.
- P.E. 3-01-18 to 6-30-18 to Ray's Home Run 609D M889036.
- A highly productive cow with the ability to consistently crank out the good ones. This is a unique opportunity to purchase the dam of Ray's Power Surge B409, a proven herd sire that's complete in every way.
- Her heifer calf is a top-notch cow prospect.

BW	Adj WW	Ratio	Adj YW	Ratio
90	629	103	983	102

56 RAY'S MISS ARLENE 708P

BD: 02/26/17 F1245390 HERD# 708 POLLED

WR-WCR POLLED PRINCE S602
WCR SIR PRINCE 9189 P
 M773211 WCR MS PAUL 6258 P

OAKDALE DUKE 9003P
 WR EASE 4412
 WCR SIR PAUL 882 ET P
 WCR MS IMPRESS 0368 ETP

VCR SIR SILVERMAN 508 P
VCR MISS SILVERMAN 259 P
 F1154628 VCR MISS SHOOTER 35 PLD

LT SILVER EDGE 2289 PLD
 VCR MISS MAC IV 224 ET P
 BALDRIDGE FASTTRACK 82F
 VMC MISS COOL MAC

CE	BW	WW	YW	Milk	MCE	MTNL	SC	TSI
5.1	-0.4	28	46	14	3.0	28	0.6	187.45

- P.E. 4-25-18 to 6-30-18 to Ray's Home Run 609D M889036.
- An outstanding first-class heifer out of Power Surge's mother. Could be the real deal on this young female.

BW	Adj WW	Ratio	Adj YW	Ratio
75				

57 RAY'S MISS ARLENE 712P

BD: 03/10/17 F1245391 HERD# 712 POLLED

WR-WCR POLLED PRINCE S602
WCR SIR PRINCE 9189 P
 M773211 WCR MS PAUL 6258 P

OAKDALE DUKE 9003P
 WR EASE 4412
 WCR SIR PAUL 882 ET P
 WCR MS IMPRESS 0368 ETP
 WCR SIR DUKE 761
 WCR MISS MAC IV 534
 LHD CHINOOK B14ET
 SM MISS HONEY A108

VCR SIR DUKE 914 PLD
RAY'S MISS ARLENE 21 X
 EF1129307 SM MISS MARCI D409

CE	BW	WW	YW	Milk	MCE	MTNL	SC	TSI
8.9	-2.2	23	38	18	3.3	30	0.6	184.48

- Open Heifer.
- A powerful cow prospect.

BW	Adj WW	Ratio	Adj YW	Ratio
65				

58 RAY'S MISS ARLENE 714

BD: 03/15/17 F1239433 HERD# 714 POLLED

WR-WCR POLLED PRINCE S602
WCR SIR PRINCE 9189 P
 M773211 WCR MS PAUL 6258 P

OAKDALE DUKE 9003P
 WR EASE 4412
 WCR SIR PAUL 882 ET P
 WCR MS IMPRESS 0368 ETP
 KEYS TEN-ACIOUS 166S
 MISS KEY LEANNE 79N
 WCR SIR VISION 4246 P
 VCR MISS VALUE 410 P

KEYS 38 SPECIAL 38Y
VCR MS SPECIAL EDITION 497 P
 F1191151 VCR MISS DAKOTA VISION 791 P

CE	BW	WW	YW	Milk	MCE	MTNL	SC	TSI
1.6	1.4	37	64	13	4.4	31	0.9	204.95

- Open Heifer

BW	Adj WW	Ratio	Adj YW	Ratio
75				

59 RAY'S MISS ARLENE 717P

BD: 09/25/17 F1245392 HERD# 717 POLLED

WCR SIR PRINCE 9189 P
RAY'S CAMPBELL C514
 M859949 RAY'S MISS ARLENE 21 X

WR-WCR POLLED PRINCE S602
 WCR MS PAUL 6258 P
 VCR SIR DUKE 914 PLD
 SM MISS MARCI D409

CCC MAX INXS 912 PLD
VCR MISS INXS 1313 P
 F1173202 VCR MISS RUBY 30 P

D&D INXS
 CCC MS MAX TRENDY S112
 HC RHINESTONE 8355
 VCR MISS DAKOTA VISION 0924 P

CE	BW	WW	YW	Milk	MCE	MTNL	SC	TSI
5.6	-0.7	26	42	14	4.3	27	0.7	189.36

- Open Heifer

BW	Adj WW	Ratio	Adj YW	Ratio
72				

60 LK RANSOM'S FOLLY 311

BD: 10/01/13 F1185268 HERD# 311 POLLED

SPARROWS MADRID 7M
KINGS RANSOM
 EM801632 MISS MAY FOLLY ET

ABC LATORO 263G
 SPARROWS BAMBI 607D
 2UP PEUGEOT ET
 THREE TREES FOLLY A03FET

LHD CIGAR E46
LK MS FOLLY
 F1081501 MISS MAY FOLLY ET

LHD MR PERFECT Y416
 LHD MS CLASSIC BELL X613
 2UP PEUGEOT ET
 THREE TREES FOLLY A03FET

CE	BW	WW	YW	Milk	MCE	MTNL	SC	TSI
-1.4	3.6	26	41	4	6.8	17	1.0	179.48

- Poll heifer calf born 5-15-18 by Key's Go Time 170B M851590.
- P.E. 5-16-18 to 9-12-18 to Key's Go time 170B.

BW	Adj WW	Ratio	Adj YW	Ratio
87	580	94		

Laneland Farms • Lots 61-62

61 LANELAND L042

BD: 11/01/15 F1215172 HERD# L042 POLLED

LT LONG DISTANCE 9001 PLD
WR TRAVEL AGENT A602
 M836604 WR MISS SILVER Y601

LT SILVER DISTANCE 5342P
 LT BELLE 7026 P
 NWMSU DOC SILVER 362 PLD
 WR MISS EASY PRO W600

HALES MR STANDARD 057
LANELAND L034D
 F1197448 CPA MS RANCHER 518W3

M6 NEW STANDARD 842 P ET
 ROR MS COWBOY 8133
 SCHURRTOP HCR RANCHER
 MS COOLEY JACKPOT 518M7

CE	BW	WW	YW	Milk	MCE	MTNL	SC	TSI
6.1	0.8	33	60	16	3.2	32	0.6	207.31

BW	Adj WW	Ratio	Adj YW	Ratio
88				

- Heifer calf born 3-15-18 by M846323. A Bluegrass son.
- AI 6-15-18 to Cooley Royce 1107T39. Appears safe to AI Date.

62 LANELAND L050

BD: 09/12/17 F1249062 HERD# L050 POLLED

LT BLUEGRASS 4017 P
MY BOY BLUE
 M846323 LANELAND L023

LT ASSERTION 1277 P
 LT PEARL'S BREEZE 2236 P
 LANELAND MOAB
 CC KUPI 009 P

TRADITIONAL FUNCTION
LANELAND L025
 F1147827 LANELAND LILLY

M6 FUNCTION 169 PET
 THREETREETRADITION1976ET
 CH SIR BRYSON 081P
 CH MISS PRIMETIME 151P

CE	BW	WW	YW	Milk	MCE	MTNL	SC	TSI
4.8	0.5	25	47	5	7.4	17	0.7	191.72

BW	Adj WW	Ratio	Adj YW	Ratio
81				

- Open heifer.
- Perfect for bull of your choice for fall 2019.
- Nice balanced EPD Looks and walks like her mother, a front pasture cow. Nice pedigree top to bottom.

River City Farm Lot 63

63 JDS MISS BONNIE

BD: 04/24/17 F1247022 HERD# 726D POLLED

LT LEDGER 0332 P
JDS LEDGERMAN 51 P
 M854587 VCR MISS SILVERMAN 302 P

LT BLUEGRASS 4017 P
 LT BRENDA 6120 PLD
 VCR SIR SILVERMAN 508 P
 VCR MISS TRADITION 1205 P

M6 COOL WIND 1140 P ET
WEAVERS COOL BONNIE 1516
 F1210249 WEAVERS BONNIE 1216

M6 COOL REP 8108 ET
 M6 0383 GERMAINE 8163 P ET
 SIRE M6 GRIDMAKER 010 P
 WEAVERS BONNIE 0506

CE	BW	WW	YW	Milk	MCE	MTNL	SC	TSI
8.0	-1.6	39	77	11	4.0	30	1.0	225.16

BW	Adj WW	Ratio	Adj YW	Ratio
65				

- AI 7-19-18 to Bamboo Passport 1327 EM815568.



LT Bluegrass 4017 P - Grandsire of Lot 63

Triple B Charolais • Lots 64-65

64 BBB GRETA 1716

BD: 11/21/17 F1258101 HERD# 1716 POLLED

LT UNLIMITED EASE 9108
LT EASY BLEND 5125 PLD
 M705113 LT BRENDA 1014 PLD

BCR POLLED UNLIMITED 003
 PP MISS SHANDY 214 R194
 WCR PRIME CUT 764 PLD
 LT BRENDA'S BREEZE 9207P

WELCOME GROVE SMOKESTER 731 ET
BBB GERI 1206
 F1168626 BBB GIDGET 0109

SCHURRTOP HCR RANCHER
 SWAN MISS MAC K004 P ET
 COOLEY BURNET 5224S
 BBB DANIELLE 511

CE	BW	WW	YW	Milk	MCE	MTNL	SC	TSI
2.1	1.0	32	54	2	5.0	19	0.9	196.63

BW	Adj WW	Ratio	Adj YW	Ratio
74				

- Open Heifer.
- She is an LT Easy Blend 5125 By a Rancher son from Welcome Grove.

65 TMC MISS SMOKETTE 258P

BD: 09/01/12 F1161195 HERD# M258 POLLED

PF INFINITE JUSTICE 1001 PET
RF JUSTIFIED 512 P
 M721424 RC MS HOTLINE 2208 PLD

PF IMPRESSED 620 P ET
 VCR MISS DUCHESS 351 PLD
 JGS HOTLINE 9513 ET
 RC MS GLADSTONE 9147

JDJ SMOKESTER J1377 P ET
TMC MISS SMOKESTER 861P TW
 F1101766 ACE MS PRIME TIME 917

LHD CIGAR E46
 JD MS COMMANDER B309
 WCR PRIME CUT 764 PLD
 ACE MS UNLTD CROSS G71 P

CE	BW	WW	YW	Milk	MCE	MTNL	SC	TSI
-0.1	3.8	26	51	9	2.1	22	0.8	193.17

BW	Adj WW	Ratio	Adj YW	Ratio
90				

- Heifer Calf born 5-13-18 By TMC Mueller M982P M782839.
- Bred to TMC Mueller M782839.
- Both are straight Tim Mueller breeding.

Mike Foster • Lots 66-67

66 MLF LEDGER'S VERNA 24 PLD

BD: 09/28/15 F1214967 HERD# 1524 POLLED

LT BLUEGRASS 4017 P
LT LEDGER 0332 P
 M791626 LT BRENDA 6120 PLD

SRC BLUEGRASS T14
MLF MISS VERNA BLUE PLD
 F1131583 THREE TREES VERNA 4192

LT ASSERTION 1277 P
 LT PEARL'S BREEZE 2236 P
 LT RIO BRAVO 3181 P
 LT BRENDA'S EASE 3055PLD

LT BLUEGRASS 4017 P
 CJC MS LEGEND H124
 LT WYOMING WIND 4020 PLD
 THREE TREES VERNA 1881ET

CE	BW	WW	YW	Milk	MCE	MTNL	SC	TSI
6.4	-0.6	28	54	7	5.3	21	1.3	203.40

• AI to LT Landmark 5052P M866771.
 Breeding status on sale date.

BW	Adj WW	Ratio	Adj YW	Ratio
75	646	98		

67 MLF PERFECT EASEY B PLD

BD: 04/16/13 F1187773 HERD# 1314 POLLED

LT UNLIMITED EASE 9108
EJS PERFECT EASE 9018 PET
 EM771780 DS PERFECT BELL 851ETPLD

EJS PERFECT DUKE 7203 P ET
EJS MS PERFECT DUKE 9039 PLD
 F1102644 M6 MS PERFECT 8426 PLDET

BCR POLLED UNLIMITED 003
 PP MISS SHANDY 214 R194
 WCR SIR FA MAC 2244
 SC MISS PERFECT S507P

WCR SIR DUKE 761
 DS PERFECT BELL 851ETPLD
 LHD MR PERFECT Y416
 CC MISS SEXY SIS 817

CE	BW	WW	YW	Milk	MCE	MTNL	SC	TSI
5.7	0.6	23	36	8	6.0	19	0.5	179.62

• AI to M6 Cool Rep EM770701. Breeding status on sale date.

BW	Adj WW	Ratio	Adj YW	Ratio
78	644	100	919	95

Jason Blackwelder • Lot 68

68 3 EMBRYOS

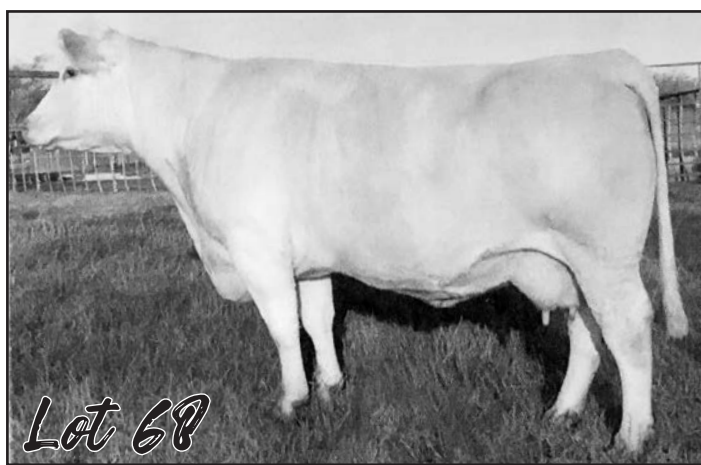
M6 COOL REP 8108 ET
M6 SLAM DUNK 3115 P ET
 EM844484 M6 MS NEW JEWEL 0155 PLD

SR/NC FIELD REP 2158 P ET
M6 MS NANCY REP 007 P ET
 EF1127305 M6 MS 761 NANCY 6100 P ET

M6 COOL DUDE 6463 P ET
 SR LADY EASE 914 ET
 M6 NEW STANDARD 842 P ET
 M6 MS 5078 MARK 635 PLD ET

LHD MR PERFECT Y416
 SR LADY EASE 914 ET
 WCR SIR DUKE 761
 M6 MS H45 NANCY 382 ET

- 007 is a proven donor and an own daughter of the "6100" cow who has had quite an influence on the breed.
- Embryos sell with a guarantee of at least one pregnancy if put in by a certified embryologist.
- Stored at Large Animal Services of East Tennessee, Dr. Mitchell Parks.



KG Shults • Lot 69

69 THREE TREES RUBY 1020 FLUSH

BD: 01/06/01 F951887 POLLED

2UP LIMITED EDITIONL147
2UP PEUGEOT ET
 M451420 PALGROVEESTELLA14PKJ124E

SILVERSTREAMBONECRUSHER
 KAYLAHP75KDP75D(P)
 BCJ PETER PATRIATION
 PALGROVE ESTELLA7PKE101D

VCR SIR DUKE 914 PLD
JWK RUBY E205 ET
 F753232 HBR LADY PERFORMER 934 P

WCR SIR DUKE 761
 WCR MISS MAC IV 534
 HBR PERFORMER 181 P
 HBR LADY MACK 459 P

- Selling a guaranteed flush in this donor dam.
- Guaranteed at least 5 embryos. Ruby 1020 is a daughter of the \$50,000 JWK Ruby E 205.
- A pedigree outcross with the muscling of Peugeot and the maternal power of Duke 419 and the Ruby cow Embryo Services in Greenville, TN at buyers request.
- Buyer is responsible for all costs & signings associated with this flush.



Semen Will Be Available for Pick Up Sale Day

70 20units semen RAY'S POWER SURGE B409

BD: 04/04/14 M849259 POLLED

JES CORONA J370
SCR CE CORONA POWER 222
 M826696 SCR MISS WIND POWER 047

VCR SIR SILVERMAN 508 P
VCR MISS SILVERMAN 259 P
 F1154628 VCR MISS SHOOTER 35 PLD

HCR CORONA 2105 POLLED
 JES MS HI YIELD F573
 SCR WIND POWER 8166
 SCR MISS PAUL 739

LT SILVER EDGE 2289 PLD
 VCR MISS MAC IV 224 ET P
 BALDRIDGE FASTTRACK 82F
 VMC MISS COOL MAC

CE	BW	WW	YW	Milk	MCE	MTNL	SC	TSI
6.8	-2.7	34	58	11	4.0	28	0.9	201.81

• Semen offered by Ray's Charolais Farm & Roy May & Son

BW	Adj WW	Ratio	Adj YW	Ratio
76	971	114	1275	106

71 20units semen JWK VENDETTA G221 ET

BD: 10/23/97 M482809 POLLED

WCR SIR DUKE 761
VCR SIR DUKE 914 PLD
 M297007 WCR MISS MAC IV 534

WCR SIR FA MAC 2244
JWK VANESSA D029 ET
 F697355 HBR LADY PERFORMER 934 P

BR DUKE 261
 WCR MISS TRADITION 8335
 WCR SIR FA MAC 2244
 MISS DOC 509

WCR SIR FAB MAC 809
 WCR MISS CENTURY 920 TWN
 HBR PERFORMER 181 P
 HBR LADY MACK 459 P

CE	BW	WW	YW	Milk	MCE	MTNL	SC	TSI
13.4	-1.2	19	29	25	11.1	34	1.1	180.81

• Semen offered by Roy May & Son, River City Farms, and F&F Charolais

BW	Adj WW	Ratio	Adj YW	Ratio
85	716	0		

• Bred in the Morven herd and what a pedigree.
 • Sold for \$13,000 in the Super Bull IV sale at the National Western Stock Show Denver.

72 18UNITS SEMEN MT REAL DEAL 83 P

BD: 02/03/08 M755282 POLLED

WCR SIR DUKE 761
VCR SIR DUKE 914 PLD
 M297007 WCR MISS MAC IV 534

LT WYOMING WIND 4020 PLD
VPI LAUREN 510R
 F1017520 VPI LAUREN 306N

BR DUKE 261
 WCR MISS TRADITION 8335
 WCR SIR FA MAC 2244
 MISS DOC 509

SCHURRTOP 5627
 LT CHAP'S LADY 2170P
 VPI WIDE LOAD 907J
 MFM MISS LAUREN T 159

CE	BW	WW	YW	Milk	MCE	MTNL	SC	TSI
9.8	-0.1	34	49	5	3.7	22	1.1	190.38

• Semen offered by Rambur Charolais, Muncy Charolais Farms, Roy May & Son, and Vedvei Charolais Ranch

BW	Adj WW	Ratio	Adj YW	Ratio
81	652	100	1393	100

73 5UNITS SEMEN WCR SIR DUKE 761

BD: 03/15/87 M269828 POLLED

BR DUKE 295
BR DUKE 261
 M246564 BR ANN 14

ABC WIENKS TRADITION
WCR MISS TRADITION 8335
 F430389 WCR MISS MAC 141

SPAINS QUALITY POLL 781
 BR DOT 75
 MR AAA HALL OF FAME 92/1
 B R MISS ABBEY 54

ABC HECTORAGAN
 HILAR BABA HILARA
 WCR SIR FAB MAC 809
 WCR MISS FA CENTURY 759

CE	BW	WW	YW	Milk	MCE	MTNL	SC	TSI
2.4	1.2	40	66	7	1.2	27	1.2	209.28

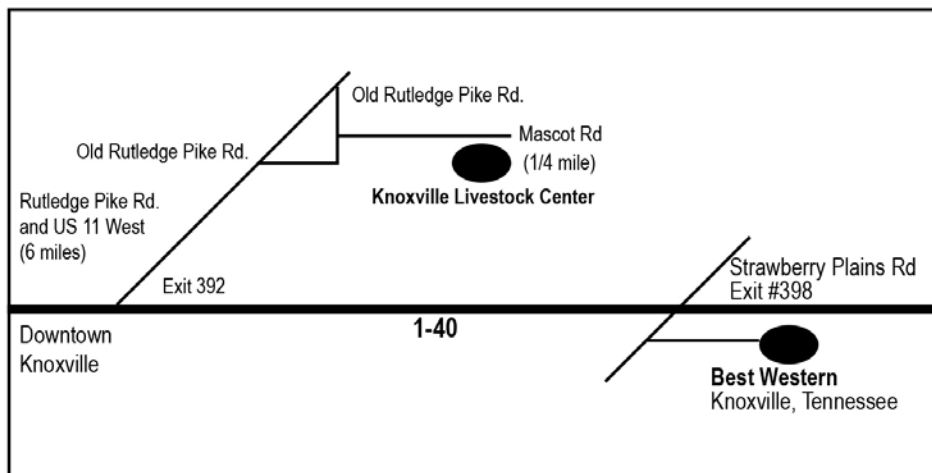
• Semen offered by Dreis Charolais

BW	Adj WW	Ratio	Adj YW	Ratio
115	773	115	1381	118

See you at the sale!

September 15, 2018

Knoxville Livestock Center, Knoxville, TN





Bill May
 2760 Renfro Road
 Jefferson City, TN 37760



Consignors

Roy May & Son
 Bill May
 865-599-5075

M&R Cattle
 Rodney King
 865-850-7016

Vannoy Charolais Farm
 Ron & Jenna Vannoy
 865-585-5612

Laneland Farms
 Jim Owens
 615-708-6023

Mike Davis
 423-489-9302

River City Farm
 Gerald Smallwood
 256-594-7941

Thomas Turner
 615-683-7828

Triple B Charolais
 Bill Baird
 615-268-7707

Jay Buzhardt
 803-240-8748

Mike Foster
 615-418-5957

Faraway Cattle Co.
 John Dellinger
 703-362-0828

Jason Blackwelder
 704-467-4566

Ray's Charolais Farm
 Ray Campbell
 931-308-7770

KG Shults
 423-330-8536



Annual Production Sale

SAT., SEPT. 15, 2018 • 1 pm

**Knoxville Livestock Center
 Knoxville, Tennessee**

